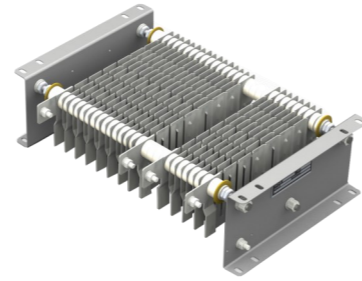
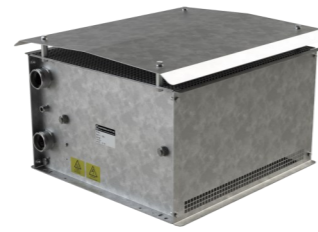


Air cooled

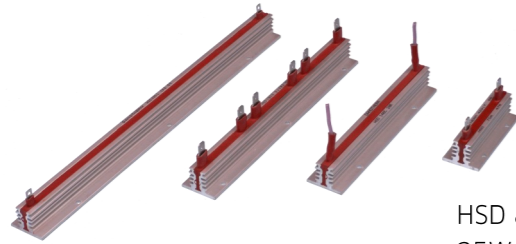


Vitreous enameled and cement coated round and flat Power resistors.
17W - 1000W

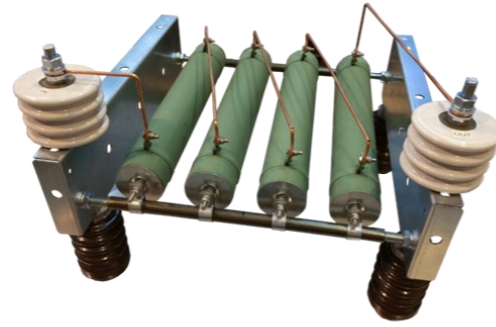


Steel grid resistors.

Heat sink resistors



HSD and HSF
25W-300W.



HV charge resistors.
50 - 200kJ

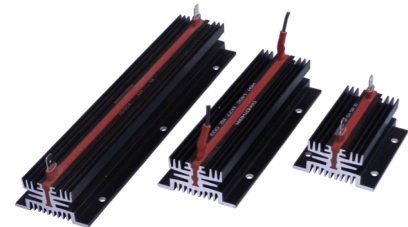
Thick film power resistors



PR100 and PR600
100W - 600W



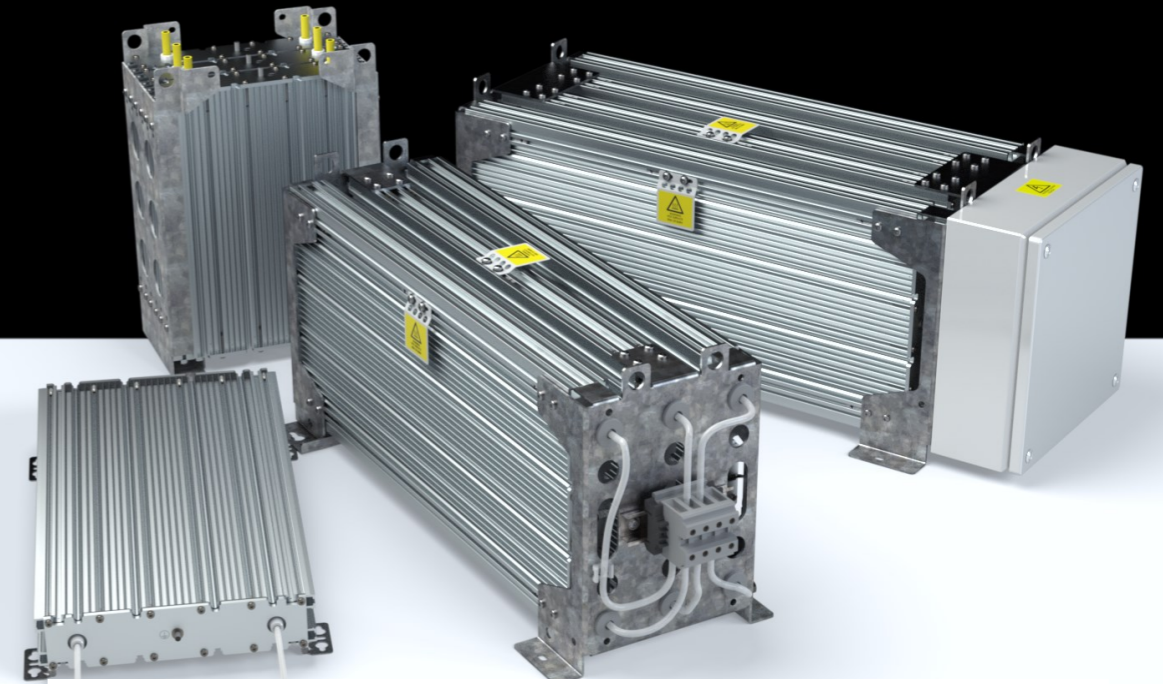
Anti moisture resistors



HSH heating / anti moisture resistors
25W - 150W



Neutral Earthing Resistor (NER)
6kV - 36kV system voltage



Resistor families

Aluminium housed resistors with high pulse load capability

Wirewound resistors in aluminium housing

Water cooled medium power and high power resistors

Steel grid resistors, natural and forced air cooled

Wirewound resistors with fixed or adjustable Ohm values,

Cement coated or vitreous enameled

Heatsink resistors

Potentiometers / Rheostats

Axial wirewound resistors silicone coated

Anti Condensation resistors

Thick Film power resistors

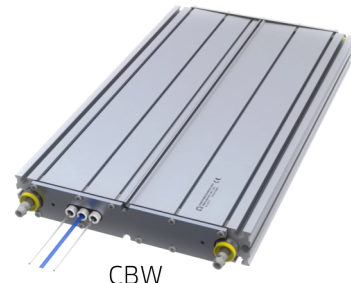


Darrah Electric Company
5914 Merrill Avenue,
Cleveland, OH 44102-5699

Phone 216-631-0912
www.darrahelectric.com

DAN EN 15.5034

Liquid cooled



CBW
1.4 - 7kW
63kJ - 1.1MJ @ 5s



WHB 16



WHHB 550
5 - 30kW



WHBS 16
10 - 45kW

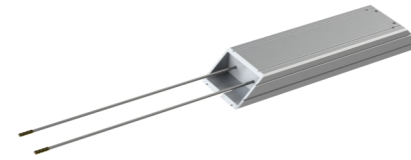


WHBSA
50 - 200kW



WHDN 16
100 - 1300kW

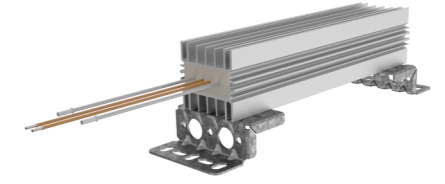
Natural air cooled



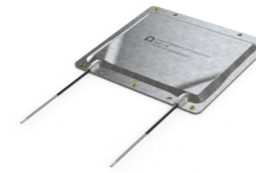
CAH / CBH
55 - 330W



CCH
100 - 570W



CAR
100 - 330W



Bi-Alpha
100 - 300W



CCR
140 - 1045W



CBR
222 - 1700W



CBT
455 - 4070W



CMQ / CVS / HVBS
850 - 4350W
100kJ - 2.5MJ @ 5s



CBS
410 - 3565W
63kJ - 1.1MJ @ 5s

Forced air cooled



TRV
50 - 275kW



HVB 70.400.1
285 kJ@1s



GRT 16
3 - 32kW